



# S. Caterina 1759

Traditional Mediterranean

Fishing Vessel

**GOZZO**

Monograph 1/12

*The book includes all timbering plans*

**Franco Fissore**

The *Felucca N.S. Del Rosario* owned by Pietro Gribaldi of Porto Maurizio had a crew of seven in addition to the captain. It towed the *Gozzo Santa Caterina*.

The bark that I propose to describe is a *Gozzo* of 1759, used as a harbor or fishing vessel, carrying one mast with a « calcet » (mast-cap), a « berthelot » (bowsprit), a main lateen yard, and a foresail. A typical Mediterranean vessel, it was very important along the coasts of Liguria as well as the Riviera.

Documentation relating to this small vessel is rather sketchy. It consists in some iconographic records and even fewer manuscript documents.

In spite of all this, we have collected sufficient documentation to be able to put together a monograph that will enable you to build a

beautiful, accurate and detailed timber-frame model. Although historical documentation is rather sparse, graphical documentation has been used to draw all the details of the framing and furniture.

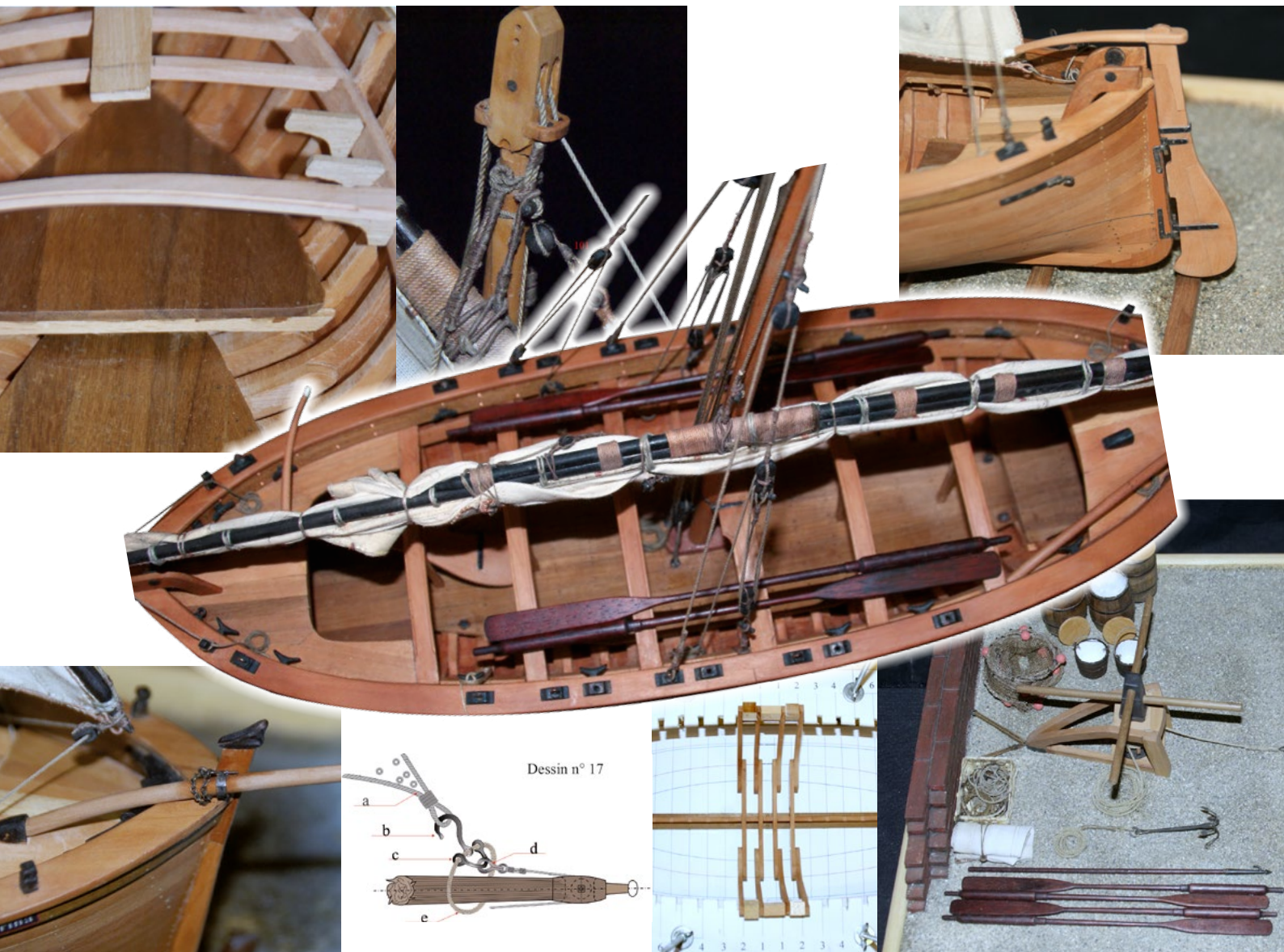
Thus leaving you, I wish that you may construct, according to your own preferences, a model worthy of a museum.

## COMPOSITION OF THE MONOGRAPH

*A 72-page booklet in 23x31 cm format including 42 pages in full color, on the construction of model, along with 19 drawings and 183 color photographs. The monograph contains the 11 plates at the 1/12 and 1/24 scales necessary for the construction of the timber frame.*

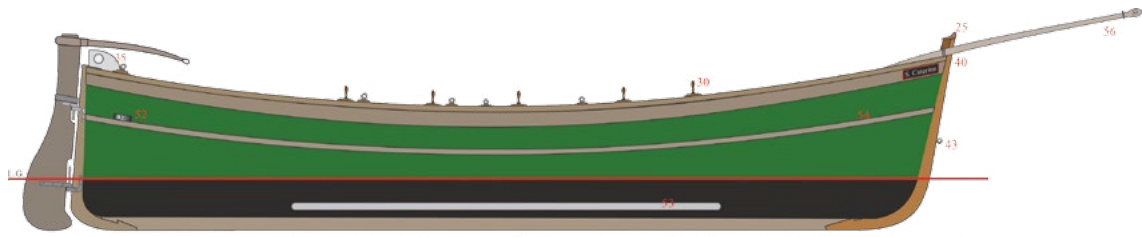
### LISTE OF THE PLATES

- |  |   |
|--|---|
| 1 Elevation, waterlines plan, body plan.             | 7 Top view of the hull and cross-sections.                                |
| 2 Caption  | 8 The completed hull.   |
| 3 Completed timber framing, elevation and plan view. | 9 Masts, lateen yard, blocks, sails, grapnel, oars, bucket, bailing scoop |
| 4 Complete frames.                                   | 10 Plan view of the hull and rigging nomenclature.                        |
| 5 Disassembled frames; floors and futtocks           | 11 Hauling (beach capstan)  |
| 6 Top view and inside arrangements                   |   |

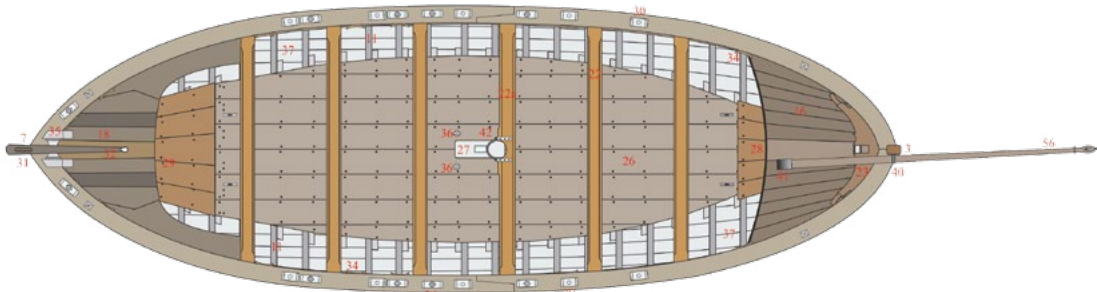


RIGGED MODEL			HULL ALONE		
Length	Width	Height	Length	Width	Height
51,45	13	40,95	40	13	5,52

## Extracts from the plans



Pp 13 12 11 10 9 8 7 6 5 4 3 2 1 1 2 3 4 5 6 7 8 9 10 11 12 13 14 PPAv



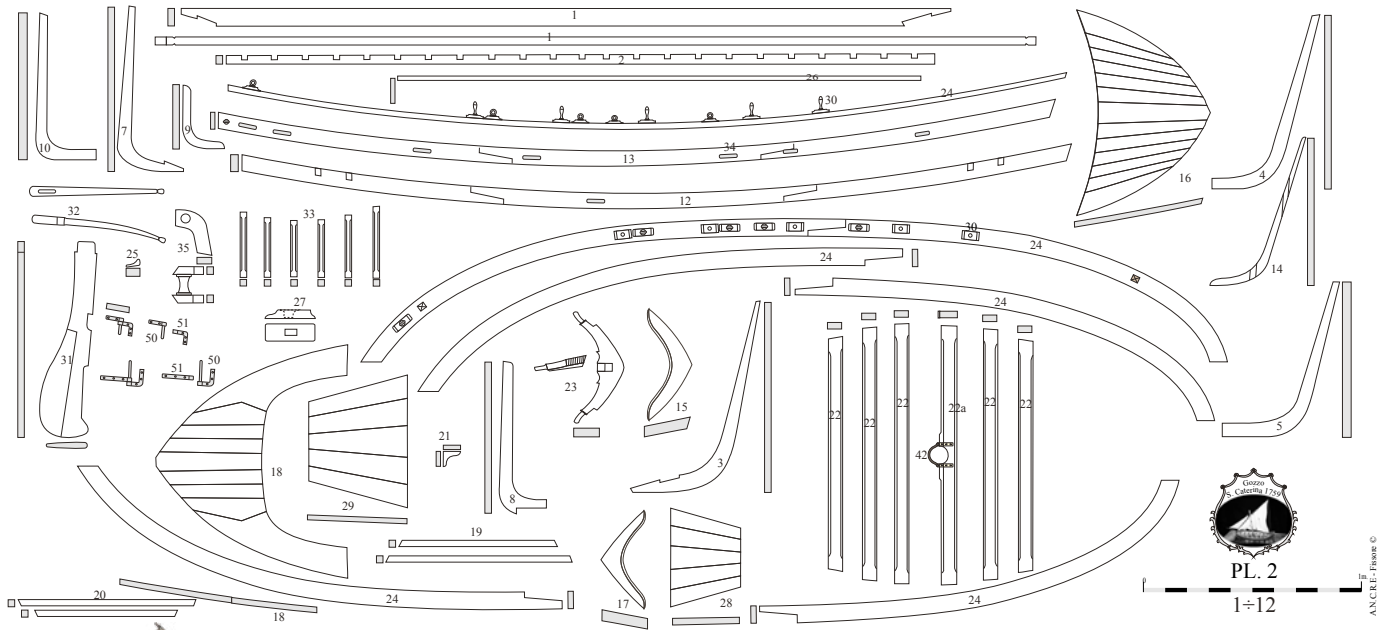
Pp 13 12 11 10 9 8 7 6 5 4 3 2 1 1 2 3 4 5 6 7 8 9 10 11 12 13 14 PPAv



PL. 8

1÷24

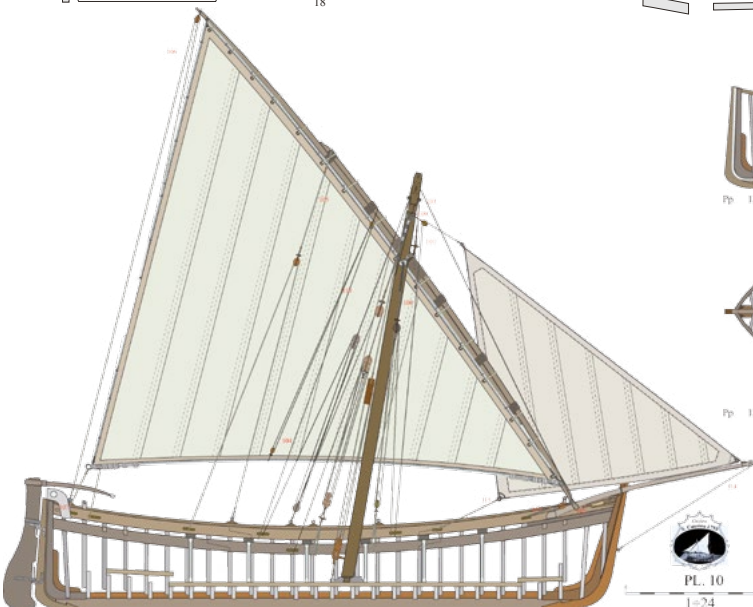
A.N.C.R.E. - France ©



PL. 2

1÷12

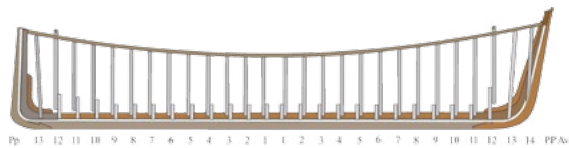
A.N.C.R.E. - France ©



PL. 10

1÷24

A.N.C.R.E. - France ©



Pp 13 12 11 10 9 8 7 6 5 4 3 2 1 1 2 3 4 5 6 7 8 9 10 11 12 13 14 PPAv



Pp 13 12 11 10 9 8 7 6 5 4 3 2 1 1 2 3 4 5 6 7 8 9 10 11 12 13 14 PPAv



PL. 3

1÷24

A.N.C.R.E. - France ©